

## ABOUT

Children's Ministry seeks to care for children and their parents. Through a broad range of programming, children will find acceptance, engage in hands-on and age-suitable learning, and grow their faith—all while having fun! From lessons to games, everything children participate in at our church is focused on teaching biblical truth.

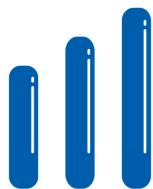
## THE NEED

- Our team is passionate about welcoming every parent and child with the love of Jesus while displaying the character of God to all.
- Our primary focus is to meet the spiritual needs of hundreds of developing children as we partner with parents to encourage their kids to apply the Bible to everyday life.

## THE OPPORTUNITY

- Provide daily support to all aspects of Children's and Special Needs Ministries.
- Own and lead data entry, hands-on setup for programming, worship leading, speaking, biblical drama, ministry planning, and following up with families to help children get plugged in.
- Help the Children's team plan and execute CampOutrageous (Bellevue's vacation Bible school) and other special events, and follow up with kids and families after each event.
- Help the Children's team plan and execute Marketplace, an interactive, hands-on opportunity for children to see biblical truth come to life.





# MINISTERIAL ASSISTANT

— LEADERSHIP TRACK —

## WHAT WE OFFER

### Beneficial Leadership Experience

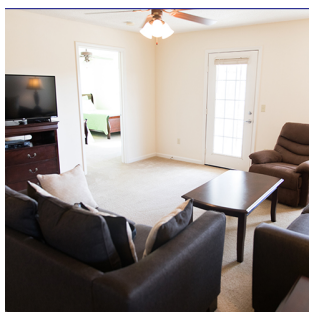
Gain hands-on experience in the planning, preparation, and implementation of ministry on both a small and large scale.

Use your unique gifting as a valuable member of a team that is committed to the mission and vision God has given us.

Receive practical and intentional leadership training through the individual supervisor relationships and the Ministerial Assistant Leadership Track.

### Compensation

- Summer internships (12 weeks): \$4,000
- Year-long internships (11 months): \$4,000/summer | \$250 a week/school year
- Free housing in a furnished apartment within 1/4 mile of the church
- Transportation/relocation stipend (up to \$900/summer | \$1,800/year)



Bellevue Baptist Church is located in Memphis, Tennessee.  
Learn more at [bellevue.org/intern](http://bellevue.org/intern).



# Bellevue

BAPTIST CHURCH

## CHILDREN

YEAR LONG

## ABOUT

Children's Ministry seeks to care for children and their parents. Through a broad range of programming, children will find acceptance, engage in hands-on and age-suitable learning, and grow their faith—all while having fun! From lessons to games, everything children participate in at our church is focused on teaching biblical truth.

## THE NEED

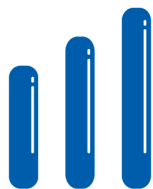
- Our team is passionate about welcoming every parent and child with the love of Jesus while displaying the character of God to all.
- Our primary focus is to meet the spiritual needs of hundreds of developing children as we partner with parents to encourage their kids to apply the Bible to everyday life.

## THE OPPORTUNITY

- Provide daily support to all aspects of Children's and Special Needs Ministries.
- Own and lead data entry, hands-on setup for programming, worship leading, speaking, biblical drama, ministry planning, and following up with families to help children get plugged in.
- Help the Children's team plan and execute CampOutrageous (Bellevue's vacation Bible school) and other special events, and follow up with kids and families after each event.
- Help the Children's team plan and execute Marketplace, an interactive, hands-on opportunity for children to see biblical truth come to life.
- Produce weekly programming for KidVue Worship and Missions and More (M&M), our Sunday morning and Wednesday night services that include games, fun, worship, and teaching. These will require creativity and confidence both on and off the stage.







# MINISTERIAL ASSISTANT

— LEADERSHIP TRACK —

## WHAT WE OFFER

### Beneficial Leadership Experience

Gain hands-on experience in the planning, preparation, and implementation of ministry on both a small and large scale.

Use your unique gifting as a valuable member of a team that is committed to the mission and vision God has given us.

Receive practical and intentional leadership training through the individual supervisor relationships and the Ministerial Assistant Leadership Track.

### Compensation

- Summer internships (12 weeks): \$4,000
- Year-long internships (11 months): \$4,000/summer | \$250 a week/school year
- Free housing in a furnished apartment within 1/4 mile of the church
- Transportation/relocation stipend (up to \$900/summer | \$1,800/year)



Bellevue Baptist Church is located in Memphis, Tennessee.  
Learn more at [bellevue.org/intern](http://bellevue.org/intern).